

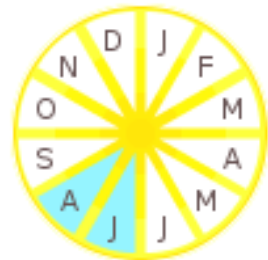
Botanical Resources of the Desolation Wilderness

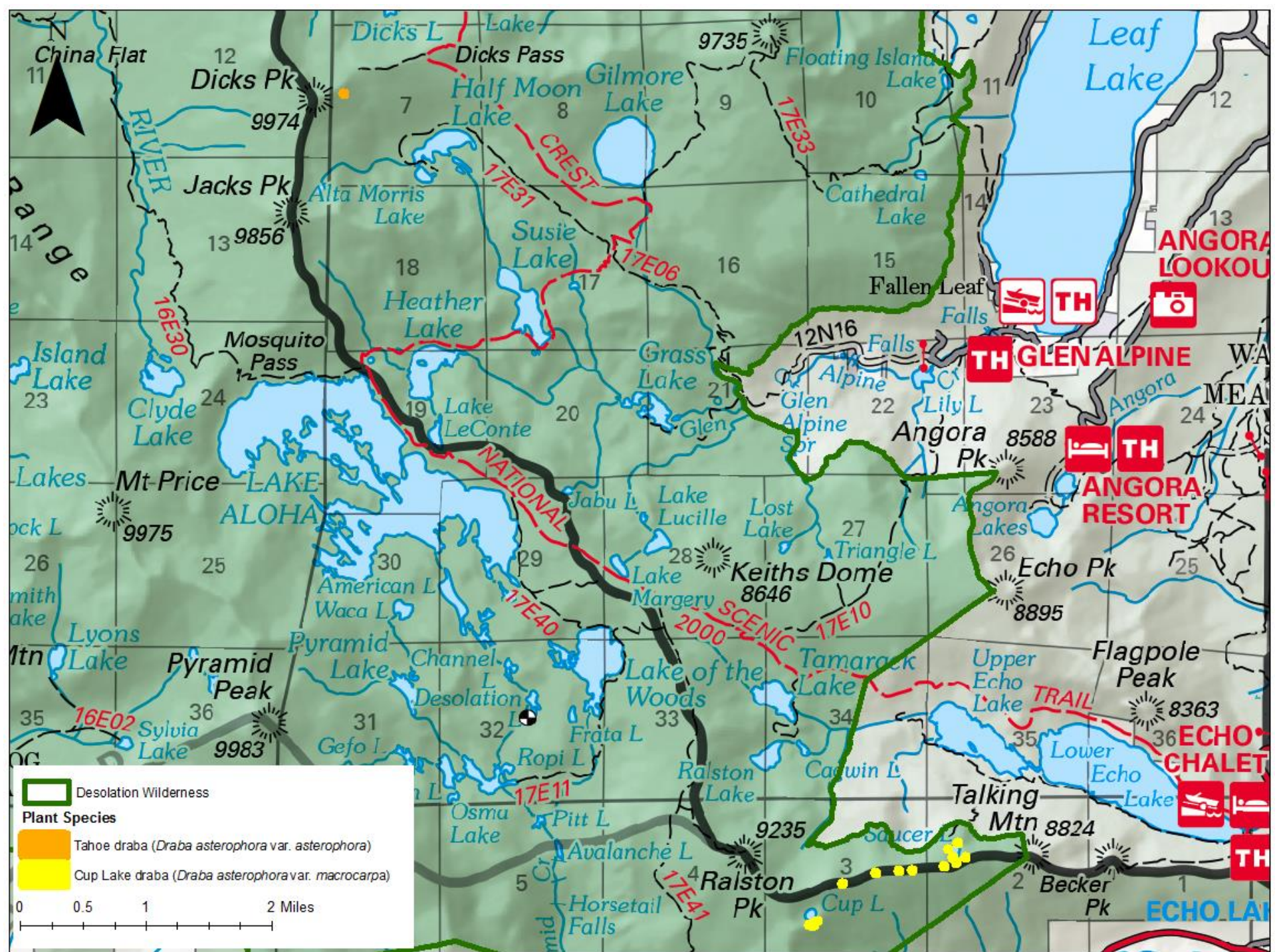
By Stephanie Calloway

Eldorado National Forest, North Zone Botanist

Draba asterophora (Cup Lake draba)

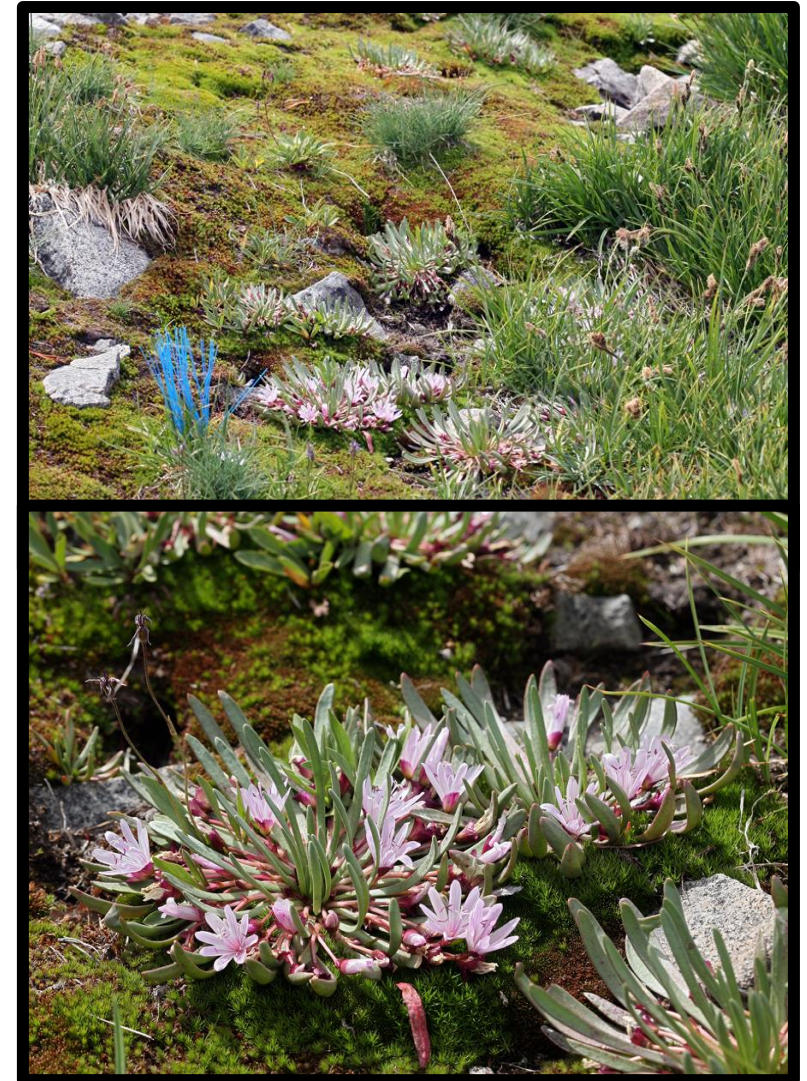
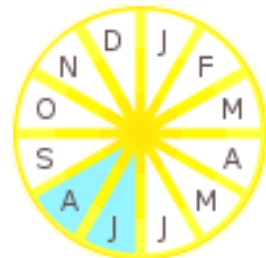
- **Habitat:** Boulder, rock fields, crevices, scree fed by snow-melt, subalpine forest
- Endemic to subalpine and alpine areas of Sierra Nevada in Eldorado, and Placer Counties





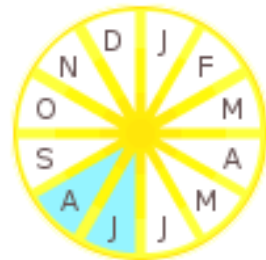
Lewisia longipetala (long-petaled lewisia)

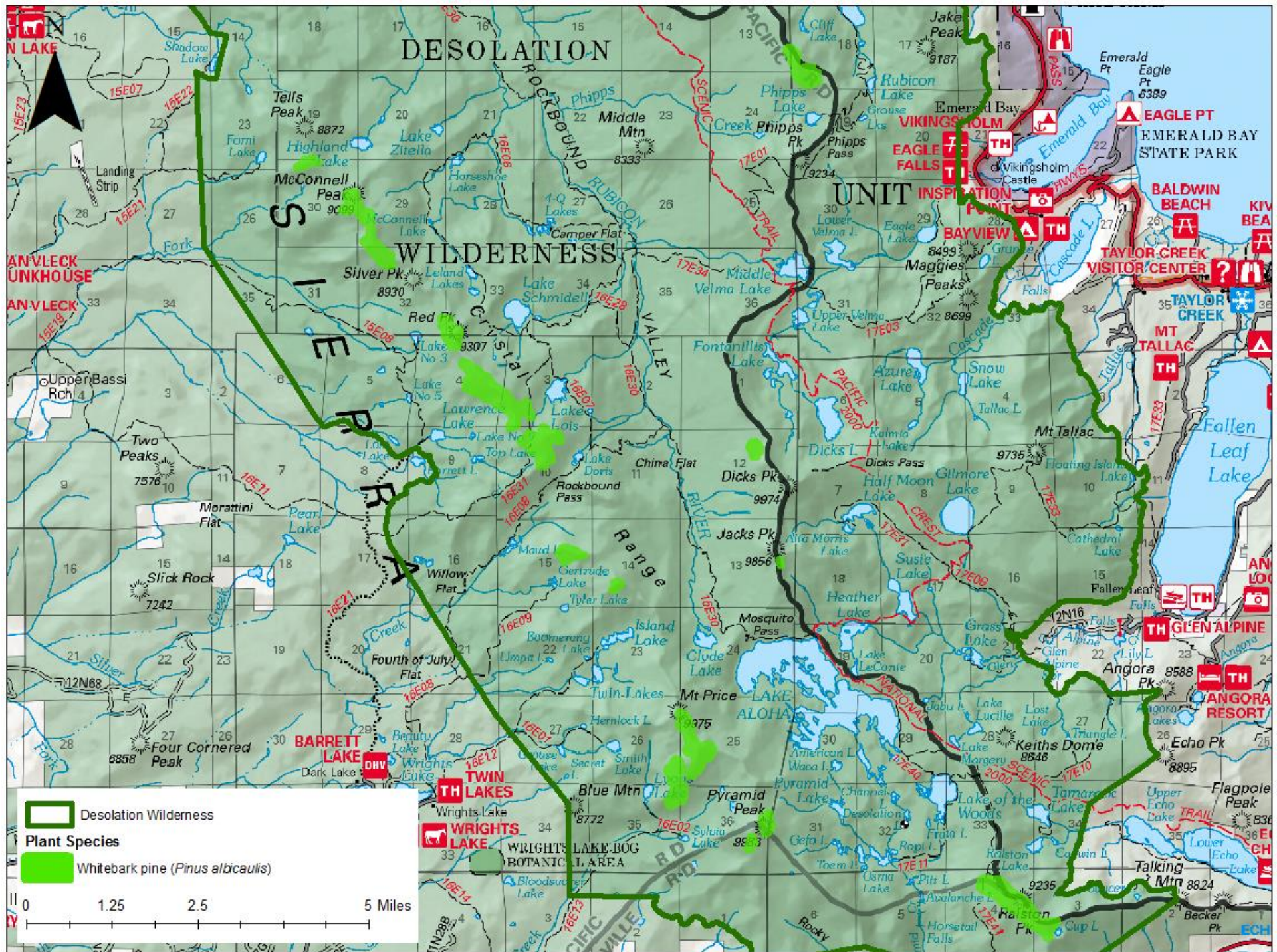
- **Habitat:** Boulder, rock fields, crevices, scree fed by snow-melt, subalpine forest
- Endemic to subalpine Sierra Nevada in Eldorado, Placer, and Nevada Counties

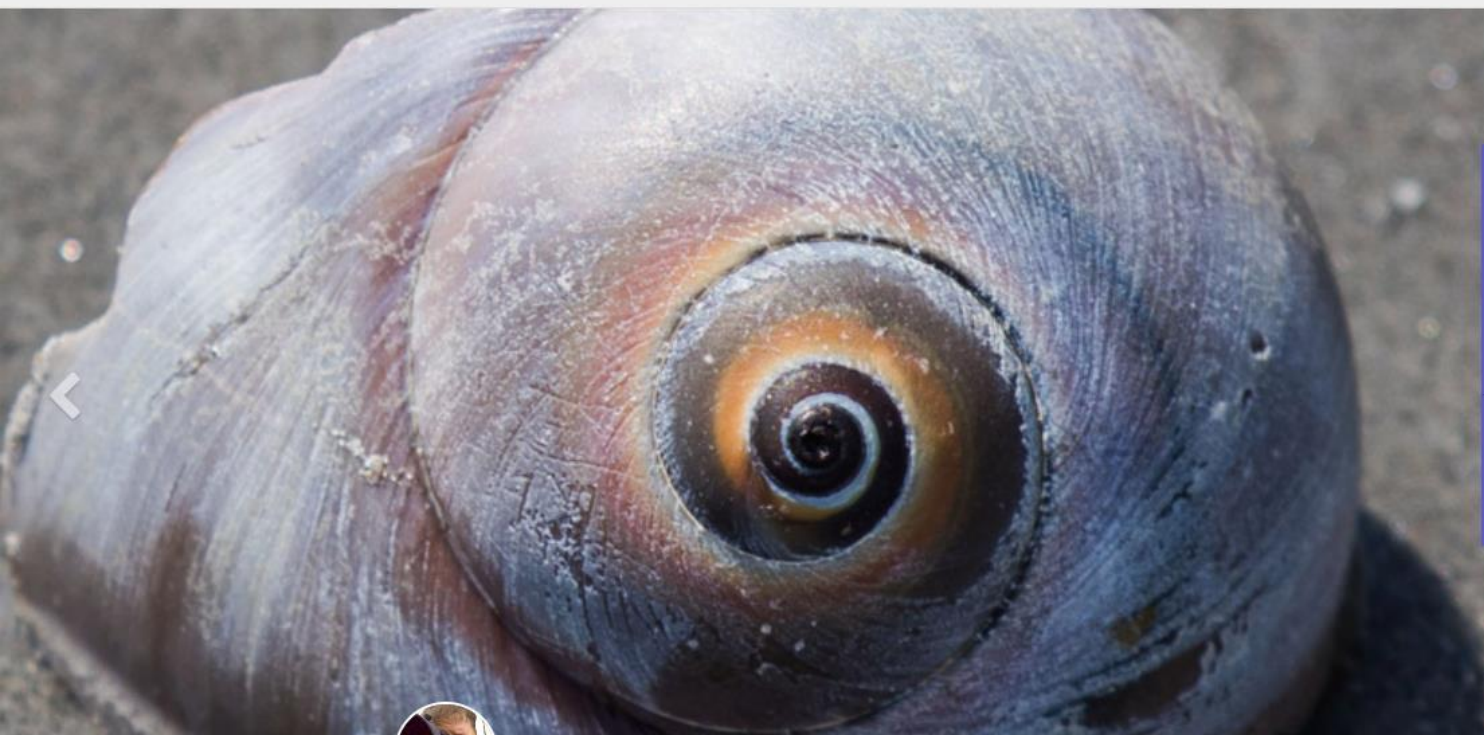


Pinus alibicaulis (whitebark pine)

- **Habitat:** Boulder, rock fields, crevices, scree fed by snow-melt, subalpine forest
- Federally listed as **threatened** by USFWS





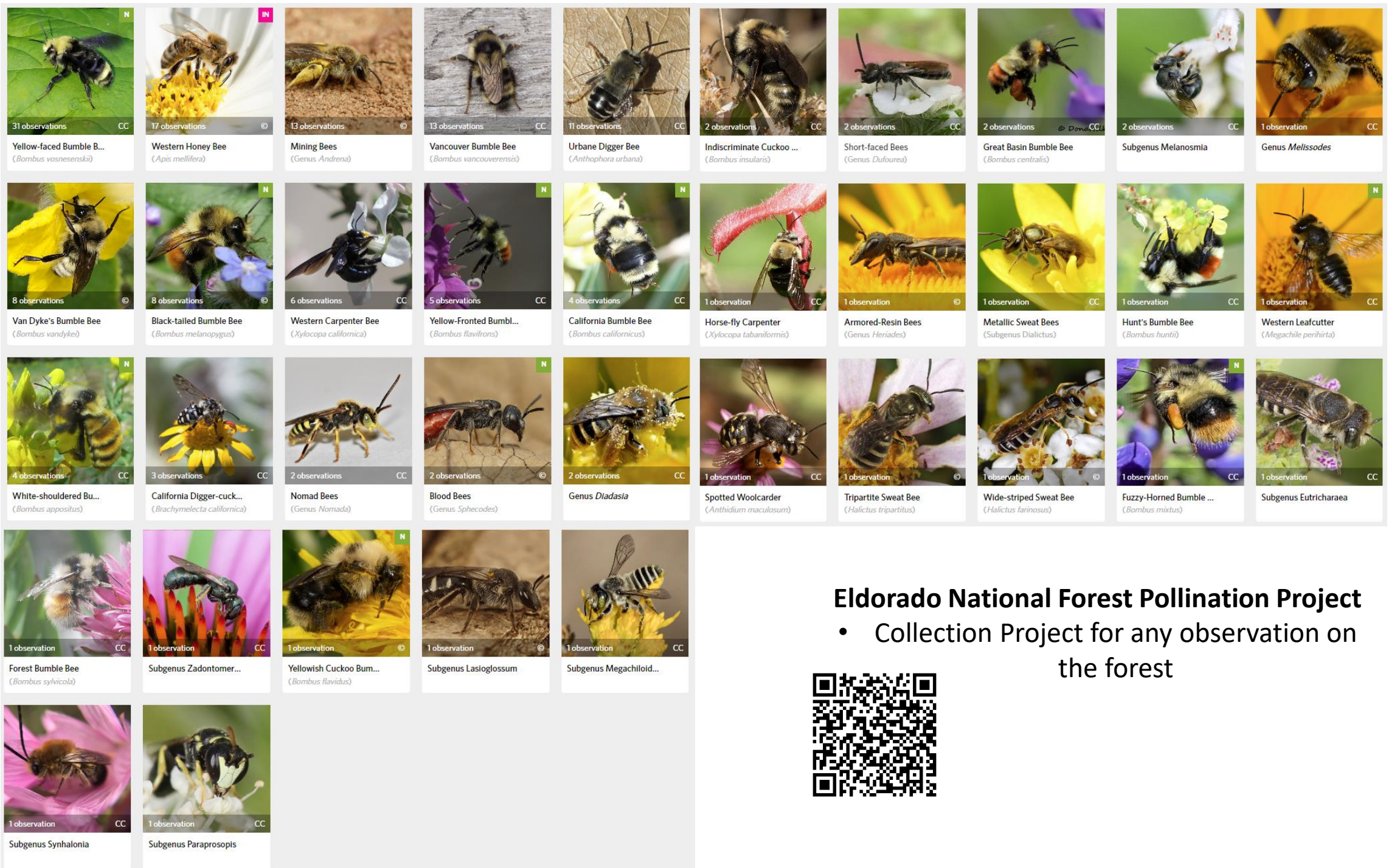


139,143,939
Observations to Date

SIGN UP → EXPLORE →



BJ Stacey ~ Shark Eye Snail from Essex County, Massachusetts, USA



Eldorado National Forest Pollination Project

- Collection Project for any observation on the forest





eldoradonf_botany



Home



Profile



Observations



Edit Observations



Calendar



IDs



Lists



Journal



Favorites



Projects



Eldorado National Forest

📅 Joined: May 16, 2023 ⌚ Last Active: May 16, 2023 🌐 iNaturalist

In an effort to keep spam off of iNaturalist, user profiles are only publicly visible after a user has contributed several Research Grade observations.

This is a group account for the Eldorado National Forest botany team. Multiple individuals use this account to document floral visitor interactions with rare flowering plant taxa on the forest.



Thank You!

- Stephanie.Calloway@usda.gov

